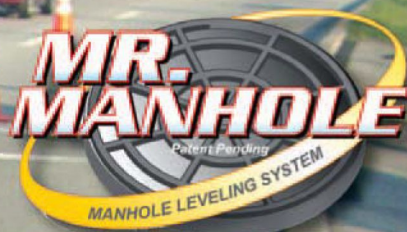


# Attachment *CONNECTION*™

*The Total Source for Construction Attachments*

[www.attachmentconnection.com](http://www.attachmentconnection.com)

800.247.2000



*The Future Of Manhole Repair*  
*Pages 6-7*



Attachments in The News

Product Review - Excavator Buckets

Attachments @ Work



# THE FUTURE OF MANHOLE REPAIR

By EDGAR CROSS

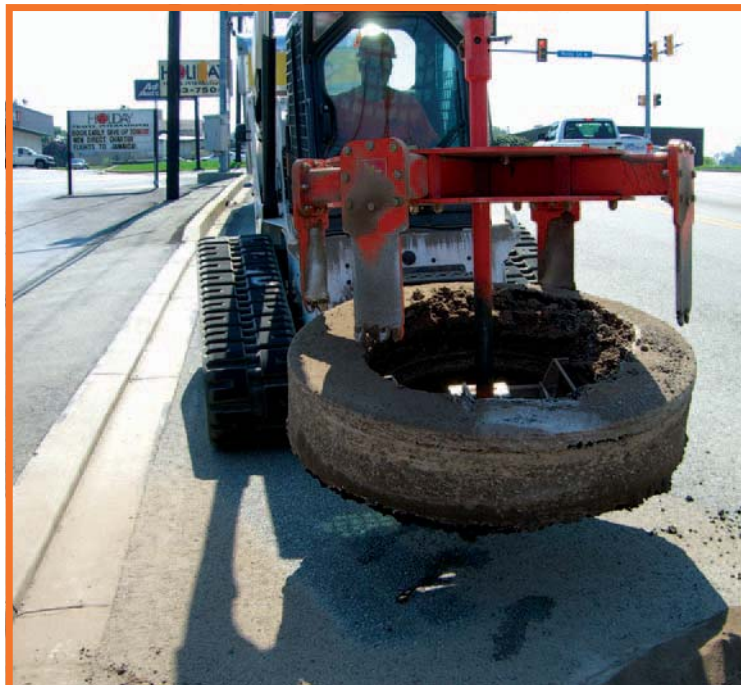


Manhole frames and lids are the doorways to the underground infrastructure that are often located in roadways. The structure must be adjusted after every paving operation. Contractors have been limited to using saws, air hammers and brute force to adjust frames and lids. After removing the offending frame from the road, the contractor is still facing the daunting task of rebuilding the chimney structure. Imagine trying to achieve a perfect height and slope, matching the road using 150lb. concrete rings. Recent EPA mandates concerning sanitary sewer leakage ( Inflow and Infiltration) add a greater challenge. In other words, the repair must be watertight.

Enter Mr. Manhole Systems, an Ohio-based company, the manufacturers of tools and materials designed to remove and rebuild manhole chimney sections ( the top part of the manhole structure ) in less than one hour. The system is designed to greatly reduce labor and material costs, while addressing safety issues and insuring a consistent high quality repair.

Contractors and municipalities are utilizing the Mr.Manhole system to speed the repair process and cut costs. Some municipalities are finding they can greatly increase the number of manholes they repair due to the time and money savings offered by the new methods.

The process begins with the Mr. Manhole Cutter/Extractor, which operates on a standard skid steer with a hydraulic auger drive unit. The device will remove most manhole frames in under ten minutes. The Cutter/Extractor works by locking into the manhole frame and cutting a circular groove through the surrounding road. The device pulls the frame and road overcut in one operation.



The device pulls the frame and road overcut in one operation.



"The rebuilding of the manhole chimney is quick, accurate, watertight and requires no adjusting rings or chimney seals."



The rebuilding of the manhole chimney is quick, accurate, watertight and requires no adjusting rings or chimney seals. The rebuilding begins by sealing a white Vylon liner to the manhole cone with a white urethane sealant and a water activated strip. The Mr. Manhole Ringsaw, a gasoline powered cutting device, trims the insert liner to the proper height and slope to match the road. Another bead of sealant is used to bond the frame to the liner. Ready mix concrete is poured completing the repair. Traffic is restored in twenty four hours. A four man crew can complete ten repairs per day.

The Mr. Manhole System will reduce repair costs by fifty percent compared to conventional methods.

The Mr. Manhole Company provides tools, material and certification training to contractors and municipalities. For more information see the company's website at [www.mrmanhole.com](http://www.mrmanhole.com) or call 419-229-3015



The device will remove most manhole frames in ***UNDER TEN MINUTES***

*Reduce repair costs by FIFTY PERCENT*

It doesn't leave a bump in the road





# THIS WORKS.



**"VERY IMPRESSIVE!"**

RICK BOWMAN  
SUPERINTENDENT  
DEPT. OF PUBLIC WORKS  
LEXINGTON, KY



PHONE: 419-229-3015 EMAIL: [SALES@MRMANHOLE.COM](mailto:SALES@MRMANHOLE.COM) ONLINE: [MRMANHOLE.COM](http://MRMANHOLE.COM)

Feb 2008 MEC - BC